

# PC NVR

FOCUS H&S

## FP-3000 Series

4K 16Ch, 36Ch, 64Ch Network Storage



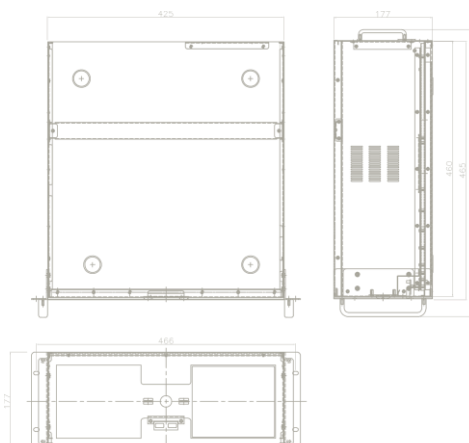
- 16ch / 36ch / 64ch Network Video Recorder
- User Friendly GUI S/W
- ezP2P™ Cloud Service without any complicated network setting
- Remote Monitoring by Remote S/W(UVMS) & Smart Phone
- Intelligent Dual(Main & Sub) Stream Recording/Network
- 4K IP Camera (3840x2160)
- ONVIF Compatible
- Major AI Camera functions : LPR / Face Recognition / Thermal / People Counter / Object Recognition, etc.



MODEL		FP-3016	FP-3036	FP-3064
Input		16 Ch	36 Ch	64 Ch
Live Display	Speed	480 fps	1080 fps	1920 fps
	Screen Mode	1, 4, 9, 16	1, 4, 9, 16, 25, 36	1, 4, 9, 16, 25, 36, 49, 64
Resolution		D1, 720p, 1080p, 4M, 4K Resolution		
Recording	Speed	480 fps	1080 fps	1080 fps
	Modes	Continuous, SScheduled, Sensor-Activated & Motion Detection Recording, & Post Alarm Recording, Emergency Recording		
Playback & Search	Speed	x1, x2, x4, x8, x16		
	Mode	480 fps	1080 fps	1920 fps
	Function	Intelli-SearCh by Time Bar, Calendar (Date & Time), Event / System SearCh		
Interface		Ethernet		
CPU		i5-9600K (Coffee Lake Refresh/3.7GHz/9MB)	i7-9700K (Coffee Lake Refresh/3.6GHz/12MB)	i7-9700K (Coffee Lake Refresh/3.6GHz/12MB)
CPU Cooler		Gemin II M5 LED	Gemin II M5 LED	Gemin II M5 LED
OS		Windows 10 Enterprise High End or (Windows 10 Pro K)	Windows 10 Enterprise High End or (Windows 10 Pro K)	Windows 10 Enterprise High End or (Windows 10 Pro K)
Main Board		Z390 M	Z390 M	Z390 M
Memory		DDR4 16GB	DDR4 32GB	DDR4 32GB
Graphic Card		Geforce GTX1050 Ti UD2	Geforce GTX1050 Ti UD2	GeForce RTX 2070 WINDFORCE D6 8GB
SSD		256GB	256GB	256GB
Case		4U (Dimension : L465* W425* H177mm) HDD 8 BAY(with SSD)	4U (Dimension : L465* W425* H177mm) HDD 8 BAY(with SSD)	4U (Dimension : L465* W425* H177mm) HDD 8 BAY(with SSD)
Power		600W/ATX	ZM700(ATX/700W)	ZM700(ATX/700W)

### Dimension

(\*) Specification is subject to change without prior notice.



## P2P Function & ezP2P™ Cloud Service (www.ezp2p.com)

P2P function allows users to connect to the NVR from the remote site - by IE Web Browser, CMS & Mobile App. - without any network setting. (QR Code Support)  
It can be managed by P2P™ Cloud Service which is a cloud-based video management system.  
Just login to ezP2P™ Cloud Server (www.ezp2p.com) with your own account and enjoy thumbnail preview and instant live monitoring.



## ezLink™ with Mac Address

The easiest way to connect to the DVR just by Mac Address.



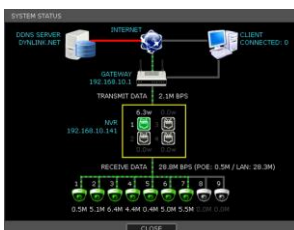
[Main Page]



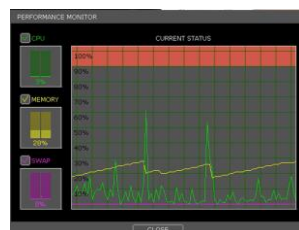
[Preview]

## System Status Monitoring

User can easily monitor NVR System Status, Performance, Network Bandwidth & PoE Status.



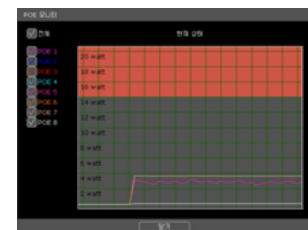
[System Status]



[System Performance]



[Network Bandwidth]

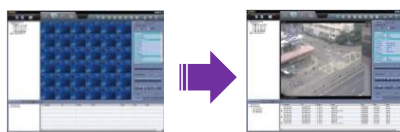


[PoE Status]

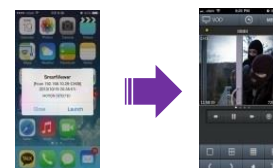
## Typical PUSH Function

2 PUSH Functions below provides you with efficient monitoring and control of your DVR. It allows you to be free from constant attention to the event that may or may not happen.

**PUSH Network**  
Connection under Sensor Event



**PUSH Video Call**  
to iPhone & Android Phone



## Smart Search Function

User can search image with multiple screen mode with detail time units(time, minutes).  
It supports very efficient(Easy & Quick) search for a long period images.



[Thumbnail Search]



[Multiple Time Search]